

# Gene Therapy Using a Secreted Single Chain Variable Fragment Targeting CCR5 to Inhibit HIV Infection

Alexander Falkenhagen<sup>1</sup>, Masoud Ameli<sup>2</sup>, Sabah Asad<sup>3</sup>, Stanley E Read<sup>1,3</sup> and Sadhna Joshi<sup>1,2\*</sup>

<sup>1</sup>Department of Laboratory Medicine & Pathobiology, University of Toronto, Toronto, Canada

<sup>2</sup>Department of Molecular Genetics, University of Toronto, Toronto, Canada

<sup>3</sup>Department of Pediatrics, The Hospital for Sick Children, Toronto, Canada

## Abstract

Interaction of R5 HIV with cellular CCR5 is mandatory for entry into host cells. The humanized monoclonal antibody PRO 140 masks cell surface CCR5 and efficiently blocks R5 HIV infection. While weekly administrations of PRO 140 have been shown to drastically reduce the viral load in patients, frequent injections of purified antibodies are neither practical nor cost-effective. Engineering gene-modified cells or tissues to secrete therapeutic proteins at sites of viral replication may advantageously replace continued drug administration. We have designed a gene encoding a secreted single chain variable fragment of PRO 140, sscFv<sub>PRO140</sub>, and have used a lentiviral vector for its delivery and expression. The sscFv<sub>PRO140</sub> was effectively secreted from gene-modified cells, remained stable in culture supernatant at 37°C, and specifically bound to cells expressing CCR5. Single-round infection assays were performed to assess inhibition of HIV infection. sscFv<sub>PRO140</sub> reduced R5 HIV entry in unmodified target cells, although at a lower potency compared to what has been reported for the parent monoclonal antibody. Entry of X4 HIV, which utilizes CXCR4 as a co-receptor, remained unaltered. Furthermore, viral entry was substantially reduced when gene-modified HIV target cells expressing sscFv<sub>PRO140</sub> were infected. Molecules such as ribozymes or Zinc finger nucleases, which act intracellularly, only confer protection to gene-modified target cells. In contrast, the proposed gene therapy strategy based on secreted anti-HIV proteins has the potential to protect the gene-modified as well as unmodified HIV target cell populations.

**Keywords:** Fusion inhibitor; Gene therapy; HIV; Lentiviral vector; PRO 140; Secreted antiviral proteins; Single-chain variable fragment; Soluble CD4

## Introduction

Human immunodeficiency virus type-1 (HIV) entry into target cells requires the presence of CD4 and a co-receptor. R5 HIV, which is predominantly involved in the transmission of the virus, utilizes the chemokine (C-C motif) receptor 5 (CCR5) as a co-receptor. Individuals who are born homozygous with a 32 base pair deletion in the CCR5 gene (CCR5 $\Delta$ 32/ $\Delta$ 32) are generally in good health and highly resistant to R5 HIV [1]. In the famous case of a patient who was treated in Berlin, transplantation of hematopoietic stem cells from a CCR5 $\Delta$ 32/ $\Delta$ 32 donor resulted in a permanent decrease of virus in the absence of antiretroviral therapy [2,3]. Several intracellular gene therapy strategies have been employed to render the target cells resistant to R5 HIV infection. These strategies include excision of the CCR5 gene *via* Zinc finger nucleases [4], cleavage of CCR5 mRNA by multimeric ribozymes [5], inhibition of CCR5 mRNA translation by small interfering or antisense RNAs [6,7], and prevention of surface CCR5 protein expression by an intrabody or an intrakine [8,9]. These molecules target CCR5 DNA, RNA or protein within the gene-modified target cells. In all cases, the gene-modified target cells were shown to be protected against R5 HIV infection. However, as it is not possible to genetically modify the entire hematopoietic stem/progenitor cell population within a patient, the therapeutic benefit would be limited because unmodified stem/progenitor cells will constantly give rise to susceptible progeny cells that will allow virus replication.

Engineering cells that continuously secrete anti-HIV proteins could extend the protection against infection to the unmodified HIV target cell population, resulting in a systemic antiviral effect. In this study we have assessed the feasibility of developing a novel gene therapy strategy based on a secreted anti-CCR5 antibody that could prevent HIV infection by masking surface CCR5 (Figure 1a). The

humanized monoclonal antibody (mAb) PRO 140 is among the most potent CCR5 inhibitors reported to date. The mAb PRO 140 binds to surface CCR5 without inducing CCR5 signaling [10] and is effective against primary HIV isolates, including those resistant to small-molecule CCR5 inhibitors [11]. Remarkably, weekly injections of mAb PRO 140 were shown to reduce R5 HIV load by 100 fold and increase CD4<sup>+</sup> T cell counts [12,13]. We designed a secreted single chain variable fragment (sscFv) based on the mAb PRO 140 and investigated whether the sscFv<sub>PRO140</sub> can protect gene-modified and unmodified target cells against R5 HIV infection.

## Materials and Methods

### Cell lines, plasmids, and peptides

Human embryonic kidney 293T cells [14] were a kind gift from Dr. Jason Moffat (University of Toronto, Toronto, Canada). U373-MAGI-CCR5E and U373-MAGI-CXCR4<sub>CEM</sub> cells [15] were obtained from Dr. Michael Emerman (AIDS Research and Reference Reagent Program, Division of AIDS, NIAID, NIH). 293T cells were cultured in complete DMEM (cDMEM) containing 10% fetal bovine serum (Thermo Fisher Scientific, Waltham, Massachusetts) and 1% Antibiotic-Antimycotic (Life Technologies, Carlsbad, California). U373-MAGI-CCR5E and

\*Corresponding author: Dr. Sadhna Joshi, Department of Molecular Genetics, University of Toronto, FitzGerald Building, 150 College Street, Room 210, M5S 3E2, Toronto, Ontario, Canada; Tel: 1-416-978-2499; Fax: 1-416-978-5954; E-mail: [sadhna.joshi.sukhw@utoronto.ca](mailto:sadhna.joshi.sukhw@utoronto.ca)

Received July 01, 2013; Accepted August 23, 2013; Published August 27, 2013

Citation: Falkenhagen A, Ameli M, Asad S, Read SE, Joshi S (2013) Gene Therapy Using a Secreted Single Chain Variable Fragment Targeting CCR5 to Inhibit HIV Infection. J Antivir Antiretrovir 5: 085-091. doi:10.4172/jaa.1000069

Copyright: © 2013 Falkenhagen A, et al. This is an open-access article distributed under the terms of the Creative Commons Attribution License, which permits unrestricted use, distribution, and reproduction in any medium, provided the original author and source are credited.

U373-MAGI-CXCR4<sub>CEM</sub> cells were cultured in cDMEM supplemented with 0.2 mg/ml G418 (Sigma-Aldrich, St. Louis, Missouri), 0.1 mg/ml hygromycin B (Life Technologies), and 1.0 µg/ml puromycin (Bioshop, Burlington, Canada). pLVX-IRES-ZsGreen1 (hereafter referred to as pLVX) was purchased from Clontech (Mountain View, California). The genes encoding sscFv<sub>PRO140</sub> and sCD4 were codon-optimized for expression in human cells and synthesized by Genscript (Piscataway, New Jersey). These genes were cloned into the multiple cloning site of pLVX to generate pLVX-sscFv<sub>PRO140</sub> and pLVX-sCD4. pLJM2, psPAX2, and pMD2.G were generously donated by Dr. Moffat. The pJRF1-env and pHXB2-env plasmids were a kind gift from Dr. Donald Branch (University of Toronto). The fusion inhibitor T-20 (hereafter referred to as FI<sub>T20</sub>) was obtained through the NIH AIDS Research and Reference Reagent Program, Division of AIDS, NIAID, NIH.

### Production of lentiviral vector particles

Lentiviral vector particles were generated by calcium phosphate transfection of 293T cells as described previously [16]. Briefly, 293T cells were grown to 90% confluence in a 10 cm dish and co-transfected with 10.5 µg of a lentiviral transfer plasmid (pLVX, pLVX-sscFv<sub>PRO140</sub> or pLVX-sCD4), 7.0 µg of the packaging plasmid psPAX2, and 3.5 µg of the envelope plasmid pMD2.G encoding the vesicular stomatitis virus glycoprotein G. 16 hours after addition of the plasmids, the culture supernatants were exchanged with 8 ml of fresh medium. The culture supernatants containing the vector particles were harvested every 12 hours for a total of 4 times. Subsequently, the pooled culture supernatants were clarified using filters with a 0.45 µm pore size and concentrated by polyethylene glycol 8000 precipitation, as described previously [17]. 293T cells were transduced with serial dilutions of the vector particle stocks and the number of transducing units (TU) was determined by counting the ZsGreen1<sup>+</sup> cells [16].

### Transductions

To generate gene-modified producer cells, 293T cells were transduced with LVX, LVX-sscFv<sub>PRO140</sub> or LVX-sCD4 vector particles. Briefly, lentiviral vector particles ( $1.6 \times 10^6$  TU) were mixed with  $2 \times 10^5$  293T cells (multiplicity of infection of 8) in 500 µl cDMEM containing 8 µg/ml polybrene (Sigma-Aldrich) and the cells were seeded into 12 well plates. The medium was changed the next day, and the cells were incubated for an additional 3 days before the number of ZsGreen1<sup>+</sup> cells was determined. To generate gene-modified HIV target cells,  $1.2 \times 10^5$  U373-MAGI-CCR5E or U373-MAGI-CXCR4<sub>CEM</sub> cells were transduced with  $9.6 \times 10^5$  TU of LVX or LVX-sscFv<sub>PRO140</sub> vector particles following the same protocol (level of gene-modification, ~95%). Mixed populations of gene-modified and unmodified cells were generated by diluting the gene-modified cells with unmodified cells (level of gene-modification, ~30%) or by transducing U373-MAGI-CCR5E cells at a multiplicity of infection of 1-2 (level of gene-modification, ~50%).

### Protein purification and quantification

Gene-modified 293T cells were grown to 95% confluence in 10 cm dishes and the medium was replaced by 8 ml DMEM containing 1% FBS. The cells were incubated for 5 days before the culture supernatants were harvested, filtered through 0.45 µm filters, and loaded onto HisTALON cobalt columns (Clontech) under native conditions as per manufacturer's instructions. The eluted fractions were analyzed by 12% SDS-PAGE, followed by Coomassie Blue staining. The concentration of the purified proteins was determined using the Bradford protein assay (Bio-Rad, Hercules, California) according to the manufacturer's instructions. To quantify the concentration of sscFv<sub>PRO140</sub> present in

the culture supernatant, serial dilutions of purified sscFv<sub>PRO140</sub> and culture supernatant were analyzed in parallel by Western blot using 1 µg/ml anti-6xHis mouse mAb conjugated to horse radish peroxidase (anti-6xHis-tag/HRP; Clontech) in phosphate buffered saline (PBS). The band intensities of purified sscFv<sub>PRO140</sub> and of sscFv<sub>PRO140</sub> from the culture supernatant were compared using the software ImageJ [18].

### CCR5 binding assay

293T or U373-MAGI-CCR5E cells were grown to 100% confluence in 6 well plates and fixed with 4% paraformaldehyde. PBS or purified sscFv<sub>PRO140</sub> (70 nM) were added to the cells for 1 hour, followed by 6 washes with PBS and incubation with the anti-6xHis-tag/HRP mAb (2 µg/ml) for 1 hour. After 6 additional washes with PBS, HRP activity was detected using 3,3',5,5'-Tetramethylbenzidine liquid substrate (Sigma-Aldrich). Product formation was measured using a standard spectrophotometer at a wavelength of 650 nm.

### Production of Env-pseudotyped reporter vector particles and single-round infection assays

The reporter vector particles contained the HIV<sub>JRF1</sub> or HIV<sub>HXB2</sub> glycoproteins on their envelope and encapsidated LJM2 vector RNA encoding dsRed instead of HIV genomic RNA. The reporter vector particles were generated by calcium phosphate co-transfection of 293T cells with 9 µg of pLJM2, 6 µg of psPAX2, and 6 µg of pJRF1-env or pHXB2-env. 16 hours after the transfection, the culture supernatants were exchanged with 6.5 ml of cDMEM. The culture supernatants containing the reporter vector particles were harvested 30 hours after the medium change. Subsequently, the culture supernatants were filtered (0.45 µm) and aliquots were stored at -80°C. For single-round infection assays,  $1.2 \times 10^5$  U373-MAGI-CCR5E cells were seeded into 12 well plates and incubated for 24 hours. On the day of the infection, sscFv<sub>PRO140</sub> was added to U373-MAGI-CCR5E cells. 1 hour later, reporter vector particles and 8 µg/ml polybrene were added to each well. Single-round infection assays in the presence of sCD4 or FI<sub>T20</sub> were performed by pre-incubating the reporter vector particles with the protein-based inhibitors for 30 minutes before adding the mixture and polybrene to the cells. The medium was changed after 24 hours and the cells were cultured for an additional 4-5 days before the number of dsRed<sup>+</sup> cells was analyzed by flow cytometry or fluorescence microscopy. For infection of gene-modified U373-MAGI-CCR5E or U373-MAGI-CXCR4<sub>CEM</sub> cells,  $1 \times 10^5$  cells were seeded in a 12 well dish and incubated for 2 days. The old medium was replaced with medium containing 8 µg/ml polybrene and HIV<sub>JRF1</sub> or HIV<sub>HXB2</sub> Env-pseudotyped reporter vector particles. The cells were incubated for 24 hours. The medium was changed the next day and the cells were incubated for additional 4-5 days before analysis by flow cytometry or fluorescence microscopy.

### Flow cytometry and fluorescence microscopy

Cells were fixed with 4% paraformaldehyde. ZsGreen1<sup>+</sup> and dsRed<sup>+</sup> cells were analyzed by flow cytometry using Coulter Epics XL MCL (Beckman Coulter, Brea, California). DNA was stained with 4',6-diamidino-2-phenylindole (DAPI, Sigma-Aldrich). Fluorescence microscope images were acquired with an inverted microscope (Axiovert 135; Carl Zeiss, Jena, Germany) equipped with a charge coupled device camera (Orca R2, Hamamatsu, Quorum Technologies Inc., Guelph, Canada). All figures were colored using Adobe Photoshop.

### Statistics

Data are presented as the mean with standard error bars



representing the standard deviation. Data were analyzed by Student's t-test for significance and considered significantly different if  $p < 0.05$ .

## Results

### Design of sscFv<sub>PRO140</sub>

Smaller scFvs are favored over mAbs due to improved tissue penetration and the limited capacities of vectors used for gene delivery [19]. sscFv<sub>PRO140</sub> was designed by connecting the variable heavy ( $V_H$ ) and light ( $V_L$ ) chains of the parent mAb *via* a flexible three repeat GGGGS linker (Figure 1b). To ensure secretion, the original signal peptide (SP) was exchanged with the one from CD4 as the latter yielded a higher score for SP cleavage when analyzed with the SignalP 4.0 software [20]. Additionally, a C-terminal 6xHis-tag was included for detection and purification.

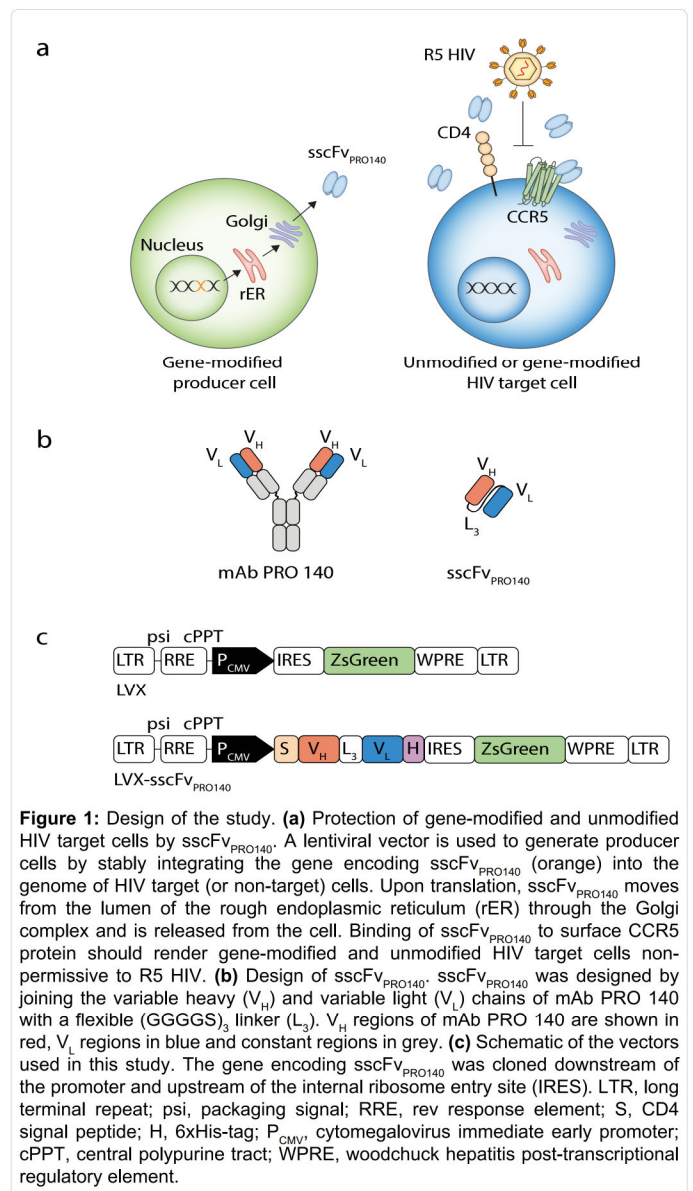
### Engineering producer cells secreting sscFv<sub>PRO140</sub>

The codon-optimized gene encoding sscFv<sub>PRO140</sub> was cloned into the lentiviral transfer vector pLVX, which expresses the fluorescent marker protein ZsGreen1 from a bicistronic mRNA under the control of the constitutive cytomegalovirus immediate early promoter (Figure 1c). Lentiviral vector particles were generated using pLVX and pLVX-sscFv<sub>PRO140</sub>. 293T cells were transduced with LVX and LVX-sscFv<sub>PRO140</sub> vector particles to engineer producer cells. PCR analysis of genomic DNA and RT-PCR analysis of cellular RNA revealed that the gene encoding sscFv<sub>PRO140</sub> integrated into the chromosome and generated full-length transcripts (data not shown). 99% of the cells transduced with LVX and 97% of the cells transduced with LVX-sscFv<sub>PRO140</sub> were positive for ZsGreen1 expression.

### Purification and characterization of sscFv<sub>PRO140</sub>

The gene-modified 293T cells were incubated in medium with a reduced serum concentration to minimize contamination during the protein purification process. sscFv<sub>PRO140</sub> was purified from the culture supernatant by affinity chromatography. Equal volumes of culture supernatant, column flow through, washes, and sequential eluted fractions were analyzed by SDS-PAGE, followed by Coomassie Blue staining (Figure 2a). A distinct prominent band of ~30 kDa, consistent with the predicted size of sscFv<sub>PRO140</sub> (267 amino acids, 28.4 kDa), was detected in the second eluted fraction. A similar sized band of decreasing intensity was also observed in fractions three and four. Diffuse bands corresponding to higher molecular weight proteins, possibly representing minor contamination with serum proteins, were present in fraction two.

To determine whether sscFv<sub>PRO140</sub> binds to surface CCR5, we used cells that either lacked or expressed CCR5 (293T or U373-MAGI-CCR5E cells, respectively). Binding of sscFv<sub>PRO140</sub> to cells was visualized with an anti-6xHis-tag/HRP antibody. In comparison with the PBS control or when sscFv<sub>PRO140</sub> was added to CCR5<sup>-</sup> 293T cells, the OD<sub>650</sub> (optical density at 650 nm) was increased when sscFv<sub>PRO140</sub> was added to U373-MAGI-CCR5E cells, indicating that sscFv<sub>PRO140</sub> binds to surface CCR5 (Figure 2b). To quantify the concentration of sscFv<sub>PRO140</sub> present in the culture supernatant of 293T cells transduced with LVX-sscFv<sub>PRO140</sub> vector particles, culture supernatant from gene-modified cells and serial dilutions of purified sscFv<sub>PRO140</sub> were analyzed by Western blot with an anti-6xHis-tag antibody (Figure 2c). Cell culture supernatant from gene-modified 293T cells revealed a distinct band correlating with the expected molecular weight; this band was



**Figure 1:** Design of the study. (a) Protection of gene-modified and unmodified HIV target cells by sscFv<sub>PRO140</sub>. A lentiviral vector is used to generate producer cells by stably integrating the gene encoding sscFv<sub>PRO140</sub> (orange) into the genome of HIV target (or non-target) cells. Upon translation, sscFv<sub>PRO140</sub> moves from the lumen of the rough endoplasmic reticulum (rER) through the Golgi complex and is released from the cell. Binding of sscFv<sub>PRO140</sub> to surface CCR5 protein should render gene-modified and unmodified HIV target cells non-permissive to R5 HIV. (b) Design of sscFv<sub>PRO140</sub>. sscFv<sub>PRO140</sub> was designed by joining the variable heavy ( $V_H$ ) and variable light ( $V_L$ ) chains of mAb PRO 140 with a flexible (GGGGS)<sub>3</sub> linker ( $L_3$ ).  $V_H$  regions of mAb PRO 140 are shown in red,  $V_L$  regions in blue and constant regions in grey. (c) Schematic of the vectors used in this study. The gene encoding sscFv<sub>PRO140</sub> was cloned downstream of the promoter and upstream of the internal ribosome entry site (IRES). LTR, long terminal repeat; psi, packaging signal; RRE, rev response element; S, CD4 signal peptide; H, 6xHis-tag; P<sub>CMV</sub>, cytomegalovirus immediate early promoter; cPPT, central polyurine tract; WPRE, woodchuck hepatitis post-transcriptional regulatory element.

absent in the control sample. In comparison to the band intensities of the purified sscFv<sub>PRO140</sub> standard, the concentration of sscFv<sub>PRO140</sub> in the culture supernatant was estimated to be 90 nM. The  $V_H$  and  $V_L$  chains of sscFv<sub>PRO140</sub> are connected with a 15 amino acid linker, which may increase the sensitivity of sscFv<sub>PRO140</sub> to proteolytic cleavage. We incubated the supernatants containing sscFv<sub>PRO140</sub> for 7 days at 37°C and analyzed samples at different time points for proteolytic cleavage by performing a Western blot (Figure 2d). No significant difference in the band intensity of day 0 to day 7 samples was observed, indicating that sscFv<sub>PRO140</sub> is stable.

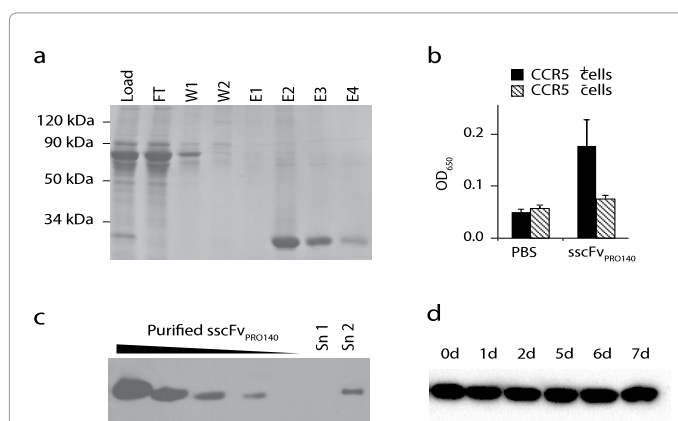
### sscFv<sub>PRO140</sub>-mediated inhibition of R5 HIV but not X4 HIV infection

To test the effect of sscFv<sub>PRO140</sub> on HIV entry, we performed single-round infection assays with HIV Env-pseudotyped reporter vector particles encoding the fluorescent protein dsRed as a marker for infection. Since the reporter vector particles are incapable of producing progeny virus particles, a reduction in the number of dsRed<sup>+</sup> cells

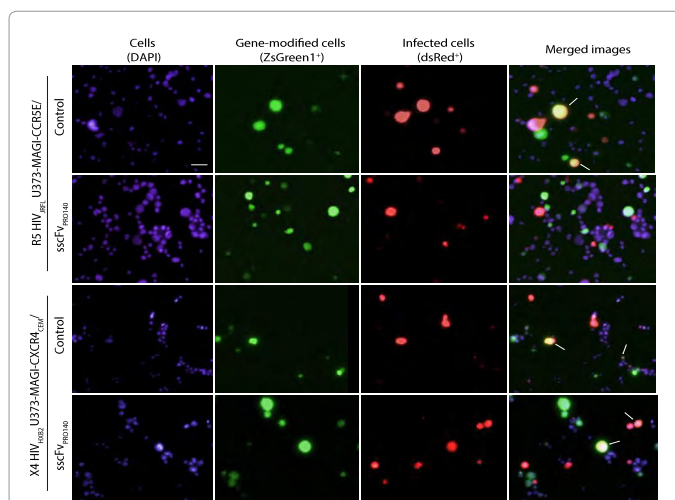
directly correlated with inhibition of viral entry. Initially, we transduced U373-MAGI-CCR5E and U373-MAGI-CXCR4<sub>CEM</sub> cells with LVX or LVX-sscFv<sub>PRO140</sub> vector particles and generated a mixed population of gene-modified and unmodified cells as described in the Materials and Methods section (level of gene-modification, ~30%). Transduced U373-MAGI-CCR5E and U373-MAGI-CXCR4<sub>CEM</sub> cells were infected with R5 HIV<sub>JRFL</sub> and X4 HIV<sub>HXB2</sub> Env-pseudotyped reporter vector particles, respectively. As sscFv<sub>PRO140</sub> targets CCR5, only R5 HIV infection was expected to be inhibited, while entry of X4 HIV which utilizes CXCR4 as a co-receptor should be unaffected. A fluorescence microscopic analysis revealed that gene-modified U373-MAGI-CCR5E cells expressing sscFv<sub>PRO140</sub> were protected from infection, but not gene-modified U373-MAGI-CXCR4<sub>CEM</sub> cells expressing sscFv<sub>PRO140</sub> (Figure 3).

### sscFv<sub>PRO140</sub>-mediated inhibition of HIV infection of gene-modified target cells

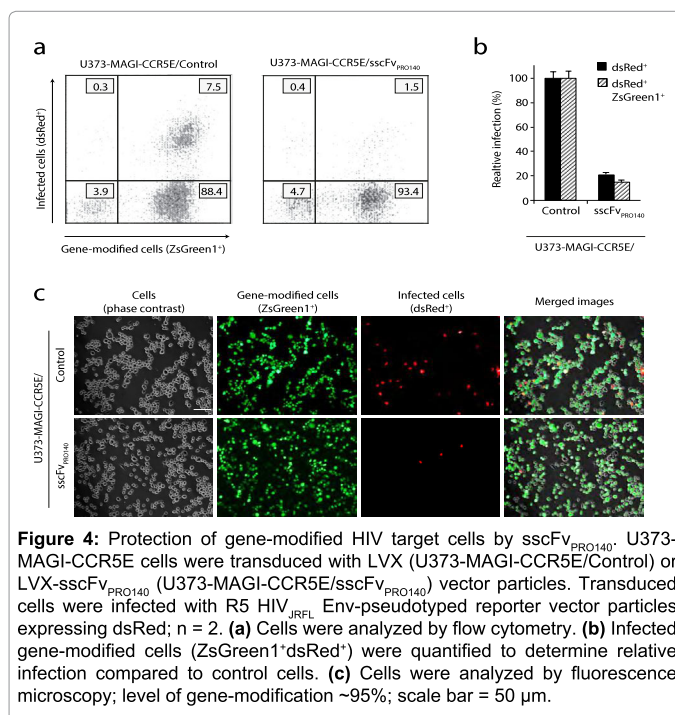
To further assess the antiviral effect of sscFv<sub>PRO140</sub> in gene-modified HIV target cells, LVX and LVX-sscFv<sub>PRO140</sub> vector particles were used to transduce U373-MAGI-CCR5E cells at a high (~95%) transduction efficiency. Single-round infection assays were performed with the gene-modified HIV target cells and the number of cells infected with the HIV<sub>JRFL</sub> Env-pseudotyped reporter vector particles was determined by flow cytometry (Figures 4a and 4b). Infection of gene-modified target cells expressing sscFv<sub>PRO140</sub> was reduced by >85% (p<0.05). This result was further confirmed by fluorescence microscopy; representative images are shown in Figure 4c.



**Figure 2:** Characterization of sscFv<sub>PRO140</sub>. (a) Purification of sscFv<sub>PRO140</sub>. 50 ml of culture supernatant from gene-modified 293T cells expressing sscFv<sub>PRO140</sub> was loaded onto a HisTalon cobalt column. The flow through (FT), washes (W1 and W2), and the sequential elution fractions from the same column (E1, E2, E3 and E4) were collected and equal volumes were separated by 12% SDS-PAGE, followed by Coomassie blue staining. (b) Binding of sscFv<sub>PRO140</sub> to cells expressing CCR5. 293T cells (CCR5-) or U373-MAGI-CCR5E cells (CCR5+) were incubated with purified sscFv<sub>PRO140</sub> or PBS, followed by incubation with an anti-6xHis mAb/HRP conjugate. OD<sub>650</sub> was measured after addition of HRP substrate; n = 4. (c) Quantification of sscFv<sub>PRO140</sub> in culture supernatants. 1 × 10<sup>6</sup> gene-modified 293T cells expressing sscFv<sub>PRO140</sub> were grown in 2 ml of culture medium for 2 days before the culture supernatant (Sn 2) was analyzed by Western blot using an anti-6xHis mAb/HRP conjugate. Culture supernatant from cells transduced with LVX vector particles was also analyzed (Sn 1). Decreasing concentrations of purified sscFv<sub>PRO140</sub> were analyzed in parallel to generate a protein standard curve (black bar, from left to right: 560, 280, 140, 70, and 35 nM). (d) Stability of sscFv<sub>PRO140</sub>. Culture supernatant from gene-modified 293T cells expressing sscFv<sub>PRO140</sub> was incubated at 37°C. Aliquots were taken at the indicated time intervals and analyzed by Western blot.



**Figure 3:** Protection of gene-modified HIV target cells expressing sscFv<sub>PRO140</sub> against R5, but not X4 HIV infection. U373-MAGI-CCR5E and U373-MAGI-CXCR4<sub>CEM</sub> cells were transduced with LVX (U373-MAGI-CCR5E/Control or U373-MAGI-CXCR4<sub>CEM</sub>/Control) or LVX-sscFv<sub>PRO140</sub> (U373-MAGI-CCR5E/sscFv<sub>PRO140</sub> and U373-MAGI-CXCR4<sub>CEM</sub>/sscFv<sub>PRO140</sub>) vector particles. The transduced U373-MAGI-CCR5E and U373-MAGI-CXCR4<sub>CEM</sub> cells were subsequently infected with R5 HIV<sub>JRFL</sub> or X4 HIV<sub>HXB2</sub> Env-pseudotyped reporter vector particles encoding dsRed, respectively. Cells were analyzed by fluorescence microscopy. Representative images are shown. White arrows indicate infected gene-modified cells (dsRed<sup>+</sup>ZsGreen<sup>+</sup>); level of gene-modification ~30%; scale bar = 25 μm.



**Figure 4:** Protection of gene-modified HIV target cells by sscFv<sub>PRO140</sub>. U373-MAGI-CCR5E cells were transduced with LVX (U373-MAGI-CCR5E/Control) or LVX-sscFv<sub>PRO140</sub> (U373-MAGI-CCR5E/sscFv<sub>PRO140</sub>) vector particles. Transduced cells were infected with R5 HIV<sub>JRFL</sub> Env-pseudotyped reporter vector particles expressing dsRed; n = 2. (a) Cells were analyzed by flow cytometry. (b) Infected gene-modified cells (ZsGreen1<sup>+</sup>dsRed<sup>+</sup>) were quantified to determine relative infection compared to control cells. (c) Cells were analyzed by fluorescence microscopy; level of gene-modification ~95%; scale bar = 50 μm.

### sscFv<sub>PRO140</sub>-mediated inhibition of HIV infection of unmodified target cells

Pre-incubation of unmodified HIV target cells (U373-MAGI-CCR5E) with varying concentrations of purified sscFv<sub>PRO140</sub> reduced infection of R5 HIV<sub>JRFL</sub> Env-pseudotyped reporter vector particles in a dose-dependent manner (Figure 5a). However, the antiviral effect

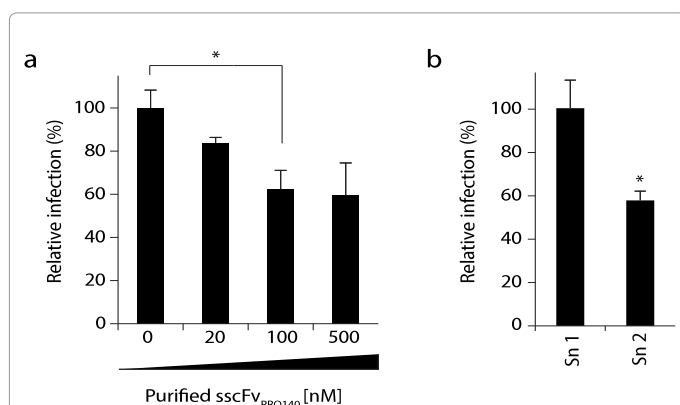


plateaued at 40% and did not increase at concentrations above 100 nM. The assay was repeated using culture supernatant from gene-modified 293T cells containing 90 nM sscFv<sub>PRO140</sub> (Figure 5b). The reduction of HIV entry in the presence of culture supernatant containing 90 nM sscFv<sub>PRO140</sub> was similar to that observed with purified sscFv<sub>PRO140</sub> at a concentration of 100 nM (Figures 5a and 5b). No obvious sscFv<sub>PRO140</sub>-mediated toxicity was observed in the gene-modified cells expressing sscFv<sub>PRO140</sub> or in the unmodified target cells incubated with sscFv<sub>PRO140</sub> (data not shown).

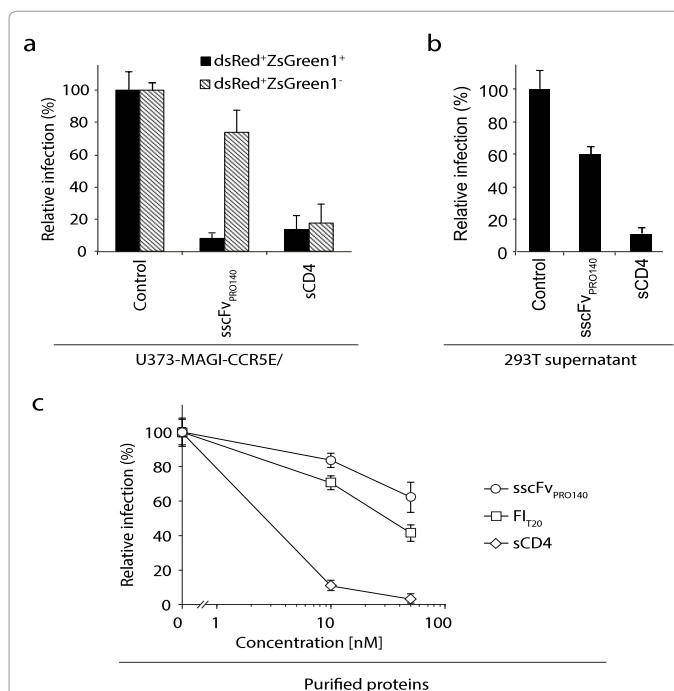
### sscFv<sub>PRO140</sub>-mediated inhibition of HIV infection in comparison to other protein-based entry inhibitors

While sscFv<sub>PRO140</sub> binds to surface CCR5 on the target cells, sCD4 binds to R5 and X4 tropic HIV Env glycoprotein gp120. In order to compare the antiviral potency of the two secreted proteins, we designed a lentiviral vector for the expression of sCD4 (LVX-sCD4) and transduced U373-MAGI-CCR5E cells with vector particles encoding sscFv<sub>PRO140</sub> or sCD4 at a low multiplicity of infection, resulting in a mixed population of gene-modified and unmodified target cells (level of gene-modification, ~50%). Cells transduced with LVX served as a control. Subsequently, we performed single-round infection assays with R5 HIV<sub>JRFL</sub> Env-pseudotyped reporter vector particles expressing dsRed. The number of infected cells in the gene-modified population and in the unmodified population was quantified by flow cytometry. Relative infections in comparison to the control cells are presented in Figure 6a. Both unmodified and gene-modified control cells were susceptible to infection. The gene-modified HIV target cells expressing sscFv<sub>PRO140</sub> were protected from infection (>90% reduction of infection), while only a modest reduction of entry was observed in the neighboring unmodified target cells (~25% reduction of infection). In contrast, HIV entry was significantly inhibited in both the gene-modified HIV target cells expressing sCD4 and neighboring unmodified target cells (>80% inhibition).

The protective effect on the unmodified cells was further compared in single-round infection experiments in the presence of culture supernatants containing sscFv<sub>PRO140</sub> or sCD4. In the presence of culture supernatants from gene-modified 293T cells transduced with LVX-sscFv<sub>PRO140</sub> or LVX-sCD4 vector particles, infection was inhibited by >40% and >85% respectively (Figure 6b).



**Figure 5:** Protection of unmodified HIV target cells by sscFv<sub>PRO140</sub>. (a) Reduction of HIV entry mediated by sscFv<sub>PRO140</sub>. Single-round infection assays were performed with R5 HIV<sub>JRFL</sub> Env-pseudotyped reporter vector particles expressing dsRed in the presence of increasing concentrations of purified sscFv<sub>PRO140</sub> or (b) culture supernatant containing 90 nM sscFv<sub>PRO140</sub> (Sn 2). Supernatant from cell transduced with LVX vector particles served as a control (Sn 1). A relative infection of 100% corresponded to 20% of infected cells (a and b); n = 2, \*p<0.05.



**Figure 6:** Comparison of sscFv<sub>PRO140</sub>-mediated inhibition of HIV infection with other protein-based entry inhibitors. (a) U373-MAGI-CCR5E cells were transduced with vector particles encoding sscFv<sub>PRO140</sub> (U373-MAGI-CCR5E/ sscFv<sub>PRO140</sub>) or sCD4 (U373-MAGI-CCR5E/sCD4) at a low multiplicity of infection to generate a mixed population of gene-modified and unmodified target cells (level of gene-modification, ~50%) as described in Materials and Methods. Cells transduced with LVX vector particles served as a control. Single-round infection assays were performed with R5 HIV<sub>JRFL</sub> Env-pseudotyped reporter vector particles expressing dsRed. The number of infected cells in the gene-modified population (dsRed<sup>+</sup>ZsGreen1<sup>+</sup>) and in the unmodified population (dsRed<sup>+</sup>ZsGreen1<sup>-</sup>) was quantified by flow cytometry. (b) 1×10<sup>6</sup> gene-modified 293T cells expressing sscFv<sub>PRO140</sub> or sCD4 were cultured for 2 days in 2 ml of culture medium. The culture supernatant was filtered and used in single-round infection assays with R5 HIV<sub>JRFL</sub> Env-pseudotyped reporter vector particles expressing dsRed. A relative infection of 100% corresponded to 15% of infected cells; n = 2. (c) Single-round infection assays were performed in the presence of purified sscFv<sub>PRO140</sub>, sCD4, or FDA-approved FI<sub>T20</sub> at the indicated concentrations. A relative infection of 100% corresponded to 15% of infected cells; n = 2.

Next, we compared the antiviral effect of purified sscFv<sub>PRO140</sub> and sCD4 at two different concentrations for inhibition of HIV entry in the unmodified U373-MAGI-CCR5E target cells. Additionally, we used the Food and Drug Administration (FDA)-approved fusion inhibitor FI<sub>T20</sub>, which consists of a peptide that binds to gp41 and inhibits membrane fusion [21]. Results are shown in Figure 6c. Under the tested conditions, sCD4 provided the strongest protection to unmodified target cells at a concentration of 50 nM (>95% inhibition of entry), followed by FI<sub>T20</sub> (~60% inhibition of entry) and sscFv<sub>PRO140</sub> (~40% inhibition of entry).

### Discussion

sscFv<sub>PRO140</sub> was used to block surface CCR5 on HIV target cells in order to render the receptor unavailable for R5 HIV binding and inhibit HIV entry. Gene-modified cells secreted sscFv<sub>PRO140</sub>, which was shown to bind to CCR5<sup>+</sup> cells. We have further demonstrated that R5 HIV entry in both gene-modified and unmodified HIV target cells is reduced.

We observed a stronger inhibition of R5 HIV infection of gene-modified HIV target cells expressing sscFv<sub>PRO140</sub> (>85%, Figure 4) than of unmodified target cells in the presence of sscFv<sub>PRO140</sub> (>40%, Figure

5). The increased inhibition of R5 HIV entry into the gene-modified target cells may be due to intracellular binding and retention of CCR5 by  $\text{sscFv}_{\text{PRO140}}$  despite the lack of a retention sequence in  $\text{sscFv}_{\text{PRO140}}$  (Figure 7a). Indeed, it has previously been described that scFvs without a retention sequence can still retain their target in the rER, probably as a consequence of their association with the binding immunoglobulin protein (BIP) [22]. Hence, reduced surface CCR5 expression on gene-modified target cells could have rendered these cells more resistant to HIV entry than the unmodified target cells, which are only protected through extracellular binding of  $\text{sscFv}_{\text{PRO140}}$  to the surface CCR5. Upon its release,  $\text{sscFv}_{\text{PRO140}}$  may also bind more efficiently to the CCR5 molecules present on the surface of gene-modified target cells due to the proximity of the two molecules (Figure 7b).

Although R5 HIV infection of unmodified target cells was reduced by  $\text{sscFv}_{\text{PRO140}}$  the neutralization potency of  $\text{sscFv}_{\text{PRO140}}$  was lower compared to what has been reported for the mAb PRO 140 [10,23,24]. The mAb PRO 140 inhibits entry of HIV<sub>JRFL</sub> Env-pseudotyped reporter

vector particles in unmodified target cells by 90% at a concentration of 28 nM [24], while the inhibition mediated by  $\text{sscFv}_{\text{PRO140}}$  reached 40% at a concentration of 100 nM (Figure 4). Although we showed that  $\text{sscFv}_{\text{PRO140}}$  binds to surface CCR5, binding could have occurred with a reduced affinity, leaving free CCR5 proteins on the cell surface. An alternative explanation for the reduced antiviral effect could be that  $\text{sscFv}_{\text{PRO140}}$  binds to CCR5 with a high affinity, but fails to effectively mask the HIV Env gp120-binding domain of CCR5 in the absence of constant fragments. Indeed, both phenomena are common problems that are encountered in the design of scFvs [19].

$\text{sscFv}_{\text{PRO140}}$  and other CCR5 inhibitors can only prevent infection by R5 HIV, but not X4 HIV. We compared the antiviral effect of  $\text{sscFv}_{\text{PRO140}}$  to inhibition of HIV infection by sCD4 and FDA-approved  $\text{F}1_{\text{T20}}$ , both of which target R5 and X4 HIV. In single-round infections, sCD4 and  $\text{F}1_{\text{T20}}$  surpassed  $\text{sscFv}_{\text{PRO140}}$ -mediated inhibition of R5 HIV entry in unmodified target cells (Figures 6b and 6c). As expected, sCD4 conferred similar protection to the gene-modified target cells from which it was secreted and to the unmodified neighboring target cells, whereas  $\text{sscFv}_{\text{PRO140}}$  protected the gene-modified cells better than the unmodified neighboring target cells (Figure 6a). sCD4 was also shown to inhibit infection of peripheral blood mononuclear cells by primary HIV strains (unpublished results).

Altering the order of  $V_{\text{H}}$  and  $V_{\text{L}}$  chains or the length of the linker sequence that connects the two domains may increase the antiviral potency of  $\text{sscFv}_{\text{PRO140}}$ . Fusion of additional antiviral moieties, such as a fusion inhibitor, to  $\text{sscFv}_{\text{PRO140}}$  may also increase its antiviral activity [25]. Alternatively, the full-length mAb PRO 140 could be expressed as a polyprotein with a self-cleavable peptide 2A in between the heavy and light chains. This approach has been used by others and was shown to allow efficient expression of another mAb [26].

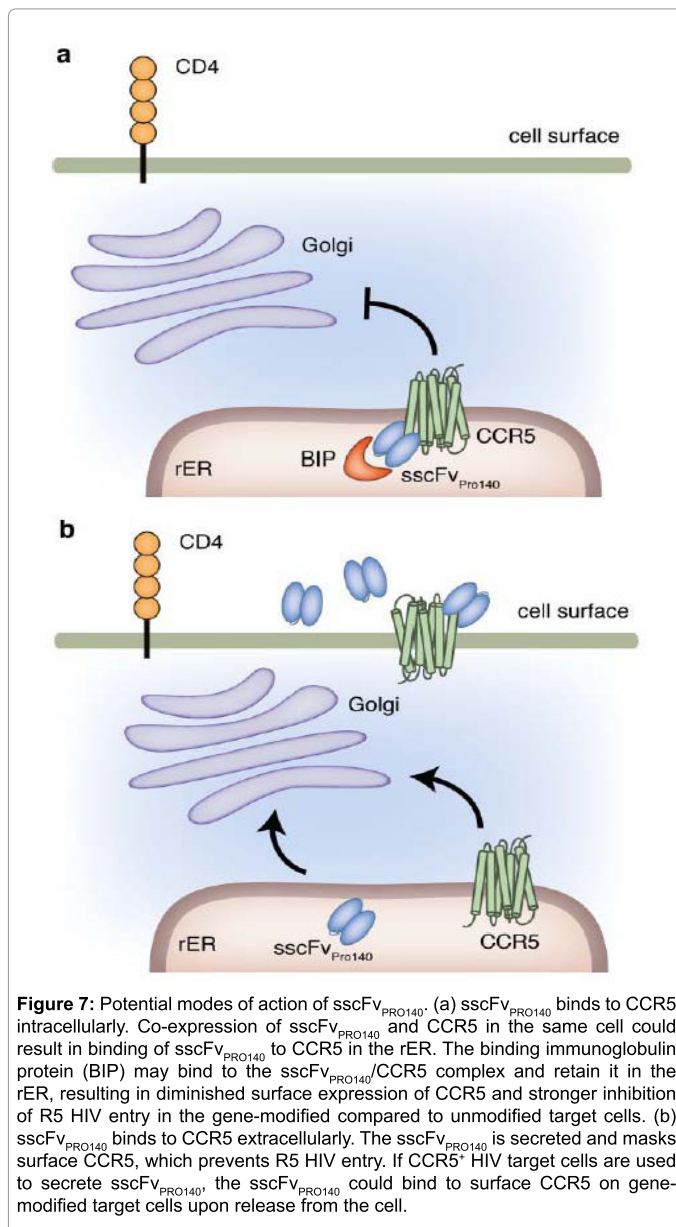
In conclusion, we have shown that sscFvs targeting CCR5 can protect gene-modified HIV target cells and have the potential to prevent infection of unmodified target cells. In the future, more potent scFvs or mAbs targeting surface CCR5 may be designed to confer protection to unmodified target cells. Gene therapy using vectors expressing these proteins may provide a feasible alternative to injections of purified mAb  $\text{PRO140}$ . It may also prove to be superior to other gene therapy strategies including Zinc finger nucleases, ribozymes, intrakines, or intrabodies that confer protection exclusively to gene-modified target cells.

#### Acknowledgements

This research is funded by Canadian Institutes for Health Research (Grant number HOP-93433).

#### References

- Liu R, Paxton WA, Choe S, Ceradini D, Martin SR, et al. (1996) Homozygous defect in HIV-1 coreceptor accounts for resistance of some multiply-exposed individuals to HIV-1 infection. *Cell* 86: 367-377.
- Hütter G, Nowak D, Mossner M, Ganepola S, Müssig A, et al. (2009) Long-term control of HIV by CCR5 Delta32/Delta32 stem-cell transplantation. *N Engl J Med* 360: 692-698.
- Allers K, Hütter G, Hofmann J, Loddenkemper C, Rieger K, et al. (2011) Evidence for the cure of HIV infection by CCR5 $\Delta$ 32/ $\Delta$ 32 stem cell transplantation. *Blood* 117: 2791-2799.
- [No authors listed] (2011) Positive results with autologous transplant of ZFN-modified CD4 T-cells: a step toward a practical, functional cure for HIV. *AIDS Patient Care STDS* 25: 693.
- Nazari R, Ma XZ, Joshi S (2008) Inhibition of human immunodeficiency virus-1 entry using vectors expressing a multimeric hammerhead ribozyme targeting the CCR5 mRNA. *J Gen Virol* 89: 2252-2261.



6. Qin XF, An DS, Chen IS, Baltimore D (2003) Inhibiting HIV-1 infection in human T cells by lentiviral-mediated delivery of small interfering RNA against CCR5. *Proc Natl Acad Sci U S A* 100: 183-188.
7. Li W, Yu M, Bai L, Bu D, Xu X (2006) Downregulation of CCR5 expression on cells by recombinant adenovirus containing antisense CCR5, a possible measure to prevent HIV-1 from entering target cells. *J Acquir Immune Defic Syndr* 43: 516-522.
8. Swan CH, Bühler B, Steinberger P, Tschan MP, Barbas CF 3rd, et al. (2006) T-cell protection and enrichment through lentiviral CCR5 intrabody gene delivery. *Gene Ther* 13: 1480-1492.
9. Schroers R, Davis CM, Wagner HJ, Chen SY (2002) Lentiviral transduction of human T-lymphocytes with a RANTES intrakine inhibits human immunodeficiency virus type 1 infection. *Gene Ther* 9: 889-897.
10. Olson WC, Rabut GE, Nagashima KA, Tran DN, Anselma DJ, et al. (1999) Differential inhibition of human immunodeficiency virus type 1 fusion, gp120 binding, and CC-chemokine activity by monoclonal antibodies to CCR5. *J Virol* 73: 4145-4155.
11. Kuhmann SE, Pugach P, Kunstman KJ, Taylor J, Stanfield RL, et al. (2004) Genetic and phenotypic analyses of human immunodeficiency virus type 1 escape from a small-molecule CCR5 inhibitor. *J Virol* 78: 2790-2807.
12. Jacobson JM, Lalezari JP, Thompson MA, Fichtenbaum CJ, Saag MS, et al. (2010) Phase 2a study of the CCR5 monoclonal antibody PRO 140 administered intravenously to HIV-infected adults. *Antimicrob Agents Chemother* 54: 4137-4142.
13. Jacobson JM, Thompson MA, Lalezari JP, Saag MS, Zingman BS, et al. (2010) Anti-HIV-1 activity of weekly or biweekly treatment with subcutaneous PRO 140, a CCR5 monoclonal antibody. *J Infect Dis* 201: 1481-1487.
14. DuBridge RB, Tang P, Hsia HC, Leong PM, Miller JH, et al. (1987) Analysis of mutation in human cells by using an Epstein-Barr virus shuttle system. *Mol Cell Biol* 7: 379-387.
15. Vodicka MA, Goh WC, Wu LI, Rogel ME, Bartz SR, et al. (1997) Indicator cell lines for detection of primary strains of human and simian immunodeficiency viruses. *Virology* 233: 193-198.
16. Tiscornia G, Singer O, Verma IM (2006) Production and purification of lentiviral vectors. *Nat Protoc* 1: 241-245.
17. Kutner RH, Zhang XY, Reiser J (2009) Production, concentration and titration of pseudotyped HIV-1-based lentiviral vectors. *Nat Protoc* 4: 495-505.
18. Schneider CA, Rasband WS, Eliceiri KW (2012) NIH Image to ImageJ: 25 years of image analysis. *Nat Methods* 9: 671-675.
19. West AP Jr, Galimidi RP, Gnanapragasam PN, Bjorkman PJ (2012) Single-chain Fv-based anti-HIV proteins: potential and limitations. *J Virol* 86: 195-202.
20. Petersen TN, Brunak S, von Heijne G, Nielsen H (2011) SignalP 4.0: discriminating signal peptides from transmembrane regions. *Nat Methods* 8: 785-786.
21. Wild CT, Shugars DC, Greenwell TK, McDanal CB, Matthews TJ (1994) Peptides corresponding to a predictive alpha-helical domain of human immunodeficiency virus type 1 gp41 are potent inhibitors of virus infection. *Proc Natl Acad Sci U S A* 91: 9770-9774.
22. Marasco WA, Haseltine WA, Chen SY (1993) Design, intracellular expression, and activity of a human anti-human immunodeficiency virus type 1 gp120 single-chain antibody. *Proc Natl Acad Sci U S A* 90: 7889-7893.
23. Trkola A, Ketas TJ, Nagashima KA, Zhao L, Cilliers T, et al. (2001) Potent, broad-spectrum inhibition of human immunodeficiency virus type 1 by the CCR5 monoclonal antibody PRO 140. *J Virol* 75: 579-588.
24. Murga JD, Franti M, Pevear DC, Maddon PJ, Olson WC (2006) Potent antiviral synergy between monoclonal antibody and small-molecule CCR5 inhibitors of human immunodeficiency virus type 1. *Antimicrob Agents Chemother* 50: 3289-3296.
25. Zhao B, Mankowski MK, Snyder BA, Ptak RG, Liwang PJ (2011) Highly potent chimeric inhibitors targeting two steps of HIV cell entry. *J Biol Chem* 286: 28370-28381.
26. Fang J, Qian JJ, Yi S, Harding TC, Tu GH, et al. (2005) Stable antibody expression at therapeutic levels using the 2A peptide. *Nat Biotechnol* 23: 584-590.

**Citation:** Falkenhagen A, Ameli M, Asad S, Read SE, Joshi S (2013) Gene Therapy Using a Secreted Single Chain Variable Fragment Targeting CCR5 to Inhibit HIV Infection. *J Antivir Antiretrovir* 5: 085-091. doi:[10.4172/jaa.1000069](https://doi.org/10.4172/jaa.1000069)

### Submit your next manuscript and get advantages of OMICS Group submissions

#### Unique features:

- User friendly/feasible website-translation of your paper to 50 world's leading languages
- Audio Version of published paper
- Digital articles to share and explore

#### Special features:

- 250 Open Access Journals
- 20,000 editorial team
- 21 days rapid review process
- Quality and quick editorial, review and publication processing
- Indexing at PubMed (partial), Scopus, DOAJ, EBSCO, Index Copernicus and Google Scholar etc
- Sharing Option: Social Networking Enabled
- Authors, Reviewers and Editors rewarded with online Scientific Credits
- Better discount for your subsequent articles

Submit your manuscript at: <http://www.editorialmanager.com/virology>